

Marksman Scope LTE J6 J8 J10 J16

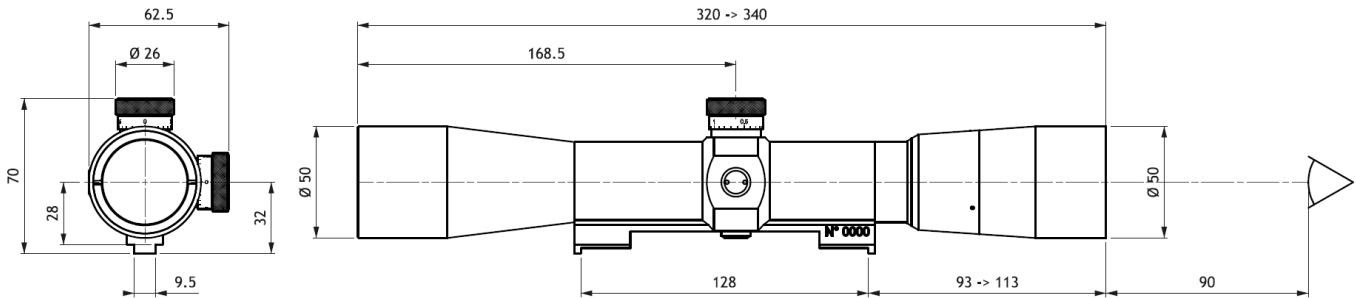


High definition optical quality

- Ultra rigid scope with fixed magnification: 6x-8x-10x-16x
- Field-qualified for 10,000 rounds of 12.7mm ammo
- Exceptional brightness greater than 90%
- Quick wide range diopter adjustment
- Large eye relief

The LTE Marksman Scope is designed to equip sniper rifles. This scope, adopted by the French Army, features a single-piece construction with the NATO mounting integrated directly on the body for mounting on all types of rifles. In addition to being very bright, the optimization of its resolving power makes it the thinnest and most accurate scope for shooting at large distances.

1. Dimensions and characteristics



Magnification	6	8	10	16
Length	340mm	340mm	340mm	340mm
Mass	740g	740g	740g	740g
Objective lens diameter	40mm	40mm	40mm	40mm
Eyepiece lens diameter	40mm	40mm	40mm	40mm
Field	60 m	45 m	35 m	22 m
Parallax adjustment	500mm	500mm	500mm	500mm
Eye relief	90mm	90mm	90mm	90mm
Elevation adjustment	± 10 m	± 10 m	± 10 m	± 10 m
Windage adjustment	± 10 m	± 10 m	± 10 m	± 10 m
Elevation resolution	0.1 m	0.1 m	0.1 m	0.1 m
Windage resolution	0.1 m	0.1 m	0.1 m	0.1 m
Mount type	NATO	NATO	NATO	NATO

2. Performance

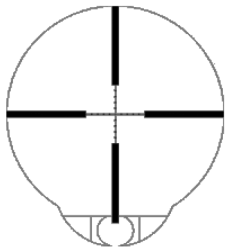
Endurance: 10,000 rounds of 12.7mm ammo
 Tightness: meets French standard GAM EG 13 Code 1

Temperature:

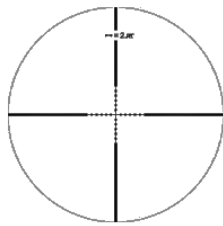
In operation: $- 31^{\circ}\text{C}$ to $+ 51^{\circ}\text{C}$
 Storage: -46°C to $+70^{\circ}\text{C}$

3. Reticle

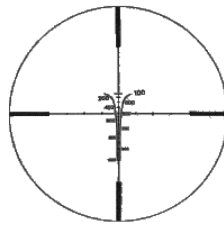
The LTE scope can be equipped with different reticles taking into account the stadiametric and ballistic data specific to individual users. The LTE scope features a reticle containing military ballistic data classified under French regulations as a Category II weapon.



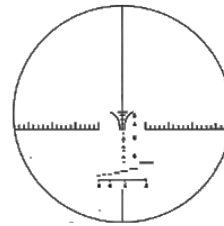
B01_4004



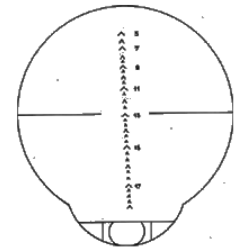
A06_4100



B01_4147



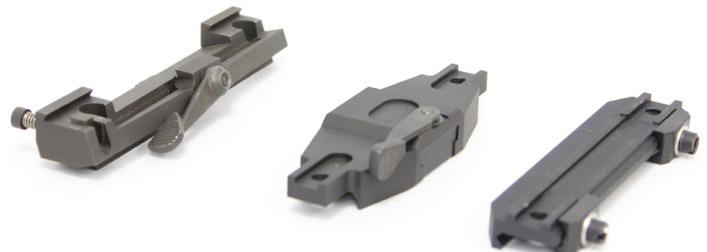
B01_4002



B01_4003

4. Mounts

The LTE scope can be mounted on both Weaver or Picatinny rails. These interfaces, lightweight with fixed locking or quick locking, respect gun-shooter-scope ergonomics in all situations. Specially tested on all calibers, under intense stress conditions, Scrome interfaces enable flawless operational performance.



5. Accessories

The LTE scope is shipped in a plastic carry case with foam packaging and the following accessories:

- Lens shade
- Eyepiece shroud
- Lens cap
- Screwdriver
- Instruction manual
- Spare parts kit
- Anti-laser filter (optional)





HIGH PERFORMANCE OPTO-MECHANICS AND MILITARY OPTRONICS

